



**SWANA**<sup>®</sup>

SOLID WASTE ASSOCIATION  
of North America

# Mid-Atlantic Chapter Solid Waste Association of North America

## SOLID WASTE NEWS For Waste Professionals

March 28, 2006

### SWANA Mid-Atlantic Chapter Board of Directors

#### President

Mike Houlihan  
*GeoSyntec Consultants*

#### Vice-President

Martin Sanford  
*Camp, Dresser & McKee*

#### Secretary

Doug Sawyers  
*Malcolm Pirnie, Inc.*

#### Treasurer

Elizabeth Smolen  
*Prince Georges County*

#### Chapter Director

Stephen Lippy  
*Baltimore County*

#### Past President

Evelyn Tomlin  
*Howard County*

#### Directors

Robert DeMarco  
*Anne Arundel County*

Tony Duckett  
*Washington DC, SWCD*

Frank Henderson  
*Harford County*

Tom Houska  
*Delaware Solid Waste Authority*

Francis Jones  
*Calvert County*

Dana Murray  
*SCS Engineers*

Mehal Trivedi  
*Frederick County*

### President's Message

By: *Mike Houlihan*

As Spring finally begins, we have many SWANA events to look forward to this year. Many are local events, and some are national events. I'd like to make you aware of them so that you can plan to join us for the events that are helpful to you in your solid-waste management activities.

On page 3 of this newsletter, you will see the list of Mid-Atlantic Chapter events for this year. As you can see, our Board meetings will again be open to the chapter members and will include tours of local solid waste facilities (in April, the new Howard County Transfer Station, and in August the Anne Arundel County Convenience Center). In mid-June we will have two events, our annual Technical Conference and our annual Crab Feast. The Technical Conference will again be co-hosted with the Maryland Recycling Coalition, and this year our event will be hosted at Towson State University in Towson, Maryland. We are very happy to be working with MRC again this year, and are looking forward to another large turnout and a strong, diverse technical program for our members to benefit from. Another event that you should be aware of is the SWANA Regional Road-E-O, which will be held again this year at the Atlantic County, NJ Utilities Authority (ACUA) landfill. Last year's event at the ACUA facility was well run and well attended, and we hope that you are planning to send your operators to compete in this year's event. For registration information see article in box to your right. Finally, I'd like to draw your attention to the Chapter Scholarship Program, which is described later in this newsletter. Our program has issued nearly \$4,000 in scholarships in each of the past several years and we intend to maintain this level of funding, and we encourage you to identify qualified students having a relationship to a Chapter member to apply for these scholarships.

Our membership continues to be one of the strongest among SWANA Chapters in the United States. However, we have some members whose memberships have lapsed. If you know any former members, please encourage them to rejoin the Chapter and take advantage of the programs and activities that we are planning for this year. Many thanks to the Board members for their support in organizing these activities.

Have a good spring, and we look forward to seeing you at one of our events in the next couple of months.

### SWANA Regional Road-E-O 2006

The NJ Chapter will host the Mid-Atlantic SWANA Regional Road-E-O on Friday, April 28, 2006 at the Atlantic County Utilities Authority, Egg Harbor Township, New Jersey. The event will bring together operators and drivers from DE, PA, MD, DC and NJ to compete for awards and an invitation to the National Competition. Registration is now open and there are a number of opportunities available for sponsorships. A financial contribution of \$200, \$500, or \$1,000 to assist the Chapter in hosting this event would be appreciated. Sponsorship of the cocktail reception at the Tropicana Hotel and Casino and breakfast and lunch on the day of the event are also available. Contributions should be sent to: **SWANA NJ Chapter, c/o Atlantic County Utilities Authority, P O Box 996, Pleasantville, NJ, 08232.** If you have any questions, please contact Florence Groeller at 609-272-6927.

For additional information, including an itinerary, event registration form and sponsorship opportunities, please visit one of the following websites:

[www.acua.com](http://www.acua.com)  
[www.swanachapters.org/newjersey](http://www.swanachapters.org/newjersey)  
[www.keystoneswana.org](http://www.keystoneswana.org)  
[www.swana-midatl.org](http://www.swana-midatl.org)





# Mid-Atlantic Chapter Scholarship 2006 Scholarship Awards Program



The Chapter Scholarship Program supplements the Grant H. Flint Scholarship Awards Program (administered by the International Headquarters). The successful Chapter applicant(s) that qualify for the Grant H. Flint Scholarship will also be submitted to the Headquarters.

Beginning this year, the chapter evaluation criteria will reflect changes made at the headquarters. For all applicants, a 4th criterion called "Quality of the written discussion" (Form I.8) will be added with a weighting of 10%. The weighting of academics would be reduced to 50%. The quality of the essay would be evaluated and rated for clarity and organization of the work, grammar, accuracy and originality, along with the other existing criteria.

Category 1	Graduating High School Senior Award	\$500 - \$1,000
Category 1A	College or University Students entering Sophomore year Award	\$500 - \$1,000
Category 2	College or University Upper Division Undergraduate Award	\$750 - \$1,000
Category 3	University Graduate Award	<u>\$750 - \$1,000</u>
Total -		\$2,500-\$4,000

For eligibility, application forms and instructions, please visit the chapter website at [www.swana-midatl.org](http://www.swana-midatl.org) or call (301) 631-3043.

**The deadline for submission of application materials to the Chapter Scholarship Committee is May 1, 2006.**

## Anne Arundel County

Anne Arundel County is looking to ride-on to an existing contract that a government agency has bid for the installation of landfill gas wells and associated piping, traps, etc. Please contact Bob DeMarco at 410-222-6108 if you have a contract in place that was awarded during the past year.

### Bid Awards

Anne Arundel County has made awards for the following equipment during the past six months and a ride-on may be possible if the same equipment is needed by your agency.

- Cat 826 Compactor*
- D-7R High Sprocket Dozer with Ripper*
- Six Inch Mud/Water Pump*
- 30 and 45 Yard Dumpsters*
- Auger Style Stationary Compactor*
- Roll Off Truck*

### Upcoming Bids

Items to be bid during the next 60 days include:

- Cat 938 Loader/Tool Carrier*
- 5' x 8' Metal Employee Booth with Heat & Air*
- 110 Yard Walking Floor Trailer (Steel)*

Any questions, please contact Mr. Tom Hayes, Maintenance Manager at 410-222-6177 ext. 3016.

## Rain Shelter Grant Program

In Fiscal Year 2003, the Maryland Used Motor Oil Recycling Program operated by the Maryland Environmental Service received one-time environmental project funding from MDE. The funding was provided to interested counties and municipalities as grants to construct rain shelters to reduce storm water run-off and potential non-point source pollution releases from used oil collection tanks and secondary containment areas. Ten grants for a maximum reimbursable amount of \$2,500.00 were issued.

Realizing the importance and success of the initial Rain Shelter Grant Program, MDE has continued to fund the program through Fiscal Years 2004-2006. At this time MES has received requests

from local jurisdictions for 9 of 10 FY06 grants. A limited number of grants will likely be available for FY2007.

Interested Used Motor Oil and Antifreeze Program Participants may contact Mike Hall at MES to apply for a Rain Shelter Grant for FY06 (one remaining) or FY07. His telephone number is (410) 729-8522. Rain Shelter Grant Funding through MES will be based on factors such as participation in the program, assuring geographic balance, date of last grant, sharing the program with larger and smaller communities, and obtaining county and municipal program participation.

**MID-ATLANTIC CHAPTER SWANA**  
**Chapter Board Meeting & Tour - Howard County, Maryland**  
**Thursday, April 20, 2006**  
**AGENDA**

10:00 - 12:00 noon	Chapter Board Meeting
12:00 - 1:00 p.m.	Lunch
1:00 - 1:30 p.m.	Travel to Alpha Ridge Transfer Station
1:30 - 2:30 p.m.	Tour of Alpha Ridge Transfer Station

**Directions to Howard County Offices: 6751 Gateway Drive, 5<sup>th</sup> Floor, Columbia**

- From I-95 - Take Exit #41 to MD 175 West, toward Columbia
- From 175 - Take Gateway Drive exit, which is on the right and just past the intersection with MD 108 (Waterloo Road)
- Gateway Building is 2<sup>nd</sup> on left along Gateway Drive
- Meeting will be held in the Executive Conference Room on the 5<sup>th</sup> Floor

**Directions to Alpha Ridge from Howard County Offices:**

- Turn right out of Gateway Building parking lot onto Gateway Drive
- Move to the far left lane and take the ramp onto MD 175 West toward Columbia
- From MD 175 take the MD 29 North Exit
- From MD 29 take the I-70 West Exit
- From I-70 take the first exit (Marriottsville Road) and bear to your right where the exit ramp forks
- Merge onto Marriottsville Road. The landfill entrance will be the first left turn (look for the sign)


**Mid-Atlantic Chapter SWANA - April Chapter Board Meeting & Tour**  
**Registration Form for Thursday, April 20, 2006**  
*(Please return by April 14, 2006)*

\$ \_\_\_\_\_ \$10 - Board Meeting, Lunch and Tour (must register by April 14<sup>th</sup>)  
\$ \_\_\_\_\_ \$10 - Lunch and Tour (must register by April 14<sup>th</sup>)  
\$ \_\_\_\_\_ \$0 - Tour Only

NAME: \_\_\_\_\_  
AFFILIATION: \_\_\_\_\_  
ADDRESS: \_\_\_\_\_  
TELEPHONE: \_\_\_\_\_ FAX: \_\_\_\_\_  
E-MAIL: \_\_\_\_\_

Mail or Fax registration to: **c/o Dana Murray**  
**SCS Engineers, 11260 Roger Bacon Drive, Reston, VA 20190**  
**Tel. (703) 471-6150, Fax (703) 471-6676**  
**E-mail: dmurray@scsengineers.com**

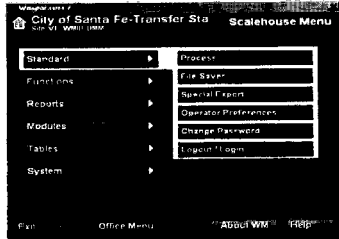
**Upcoming Events - 2006**

April 20	Board Meeting & Tour (Howard County Transfer Station)
April 28	Mid-Atlantic Regional Road-E-O (Atlantic County Utilities Authority, Egg Harbor Township, NJ)
June 14 & 15	MRC/SWANA Annual Conference (Towson State University, Towson, MD)
June 15	Board Meeting Following Conference
June 17	Annual Crab Feast at Sandy Point State Park 
August 16	Board Meeting & Tour (Anne Arundel County Convenience Center)
September 13	Annual Chapter Meeting (Location to be determined)



**Information Systems, Inc.  
WeighMaster 7®**

Information Systems, Inc. offers solid-waste scale software for landfills, transfer stations, and WTE plants.



The WeighMaster System offers accounting and reporting. ISI provides both fully and partially automated systems.

[www.isi-infosys.com](http://www.isi-infosys.com)

**METTLER TOLEDO**

**David Baechtold**

Vehicle Scale Specialist  
(410) 990-0248  
Fax: (410) 990-0360  
dave.baechtold@mtf.com

Mettler-Toledo, Inc.  
912 Langdon Ct.  
Annapolis, MD 21403  
www.mtf.com

**The CompuWeigh System™**  
**The Standard in Weighing  
and Routing Software**

Call for a free demo or download if from our web site at  
[www.ParadigmSoftware.com](http://www.ParadigmSoftware.com)

Landfills  
Transfer Stations  
Recycling

For more information call  
(410) 828-9223

Routing  
Container Tracking  
Integrated Accounting

Real-Time Transaction Processing  
SQL, MSDE Access or Oracle Database

**PARADIGMSOFTWARE**  
*The Standard in Weighing Software*

**Mid-Atlantic Chapter  
Solid Waste Association of North America**  
c/o Northeast Maryland Waste Disposal Authority  
Tower II - Suite 402, 100 South Charles Street  
Baltimore, MD 21201-2705