

# Mid-Atlantic Chapter Solid Waste Association of North America



# SWANA®

SOLID WASTE ASSOCIATION  
of North America

## Mid-Atlantic Chapter of SWANA Board of Directors

### President

Mike Houlihan  
*GeoSyntec*

### Vice-President

Martin Sanford  
*Camp, Dresser & McKee*

### Secretary

Doug Sawyers  
*Malcolm Pirnie, Inc.*

### Treasurer

Elizabeth Smolen  
*Prince Georges County*

### Chapter Director

Stephen Lippy  
*Baltimore County*

### Past President

Evelyn Tomlin  
*Howard County*

### Directors

Gregorio Africa  
*Anne Arundel County*

Robert DeMarco  
*Anne Arundel County*

Tony Duckett  
*Washington DC, SWCD*

Frank Henderson  
*Harford County*

Tom Houska  
*Delaware Solid Waste Authority*

Francis Jones  
*Calvert County*

Dana Murray  
*SCS Engineers*

Laura Thomson  
*Northeast Maryland Waste  
Disposal Authority*

Mehal Trivedi  
*Frederick County*

# SOLID WASTE NEWS For Waste Professionals

May 16, 2005

## President's Message

By Mike Houlihan

The middle of the calendar year includes many SWANA activities at both the national level and the regional/chapter level. First, in early June, SWANA will be hosting the 10<sup>th</sup> Annual Landfill Symposium in Bolder, Colorado, and our Mid-Atlantic Chapter will be having our annual Spring Technical Seminar in Catonsville, Maryland (see box this page). The technical topics covered at these seminars are highly relevant to our practices as owners, operators, and consultants involved in solid waste management. In addition, there are many training opportunities at these conferences that I hope you will consider taking advantage of. Then, on June 11<sup>th</sup>, the Chapter will host its annual crab feast at Sandy Point State Park. At this fun filled event, we will award our annual college

scholarships (see [www.swana-midatl.org](http://www.swana-midatl.org) for details). We hope you will join us at these events and keep up on the technologies and developments that affect management of solid wastes in our region.

I want to take this opportunity to thank all those who were involved in the Road-E-O that was held at Atlantic County, New Jersey in late April – many individuals from our chapter helped at the event and worked with our associates in New Jersey to make the event a big success. The event was also a success for the Mid-Atlantic participants, who took home many of the awards (see article in this issue). Congratulations to the winning participants, and thanks again to the volunteers who made the event possible.

## View Chapter Newsletters On-line

The Mid-Atlantic Chapter of SWANA has a website at [www.swana-midatl.org](http://www.swana-midatl.org). The newsletters, as well as other important information, is posted on this website.

In an effort to save on printing and postage costs, we can notify you by e-mail that the latest newsletter or meeting announcement is available on the website. If you would prefer to view this information on our website, instead of receiving a paper copy, please let us know by e-mailing Laura Thomson at [lthomson@nmwda.org](mailto:lthomson@nmwda.org).



**Crab Feast  
Reminder**

This year's Mid-Atlantic Chapter Crab Feast will be held on Saturday, June 11, 2005 at Sandy Point State Park. For additional information please visit our website at [www.swana-midatl.org](http://www.swana-midatl.org). The deadline for registrations is May 27, 2005.

**MRC & SWANA's  
Mid-Atlantic Chapter  
Joint Conference  
June 8-9, 2005**

For additional information, please visit our website at [www.swana-midatl.org](http://www.swana-midatl.org) and click on upcoming events. Registrations are due by May 27, 2005.

# Alban Tractor Presents; Computer Aided Earthmoving System

By John O'Hara

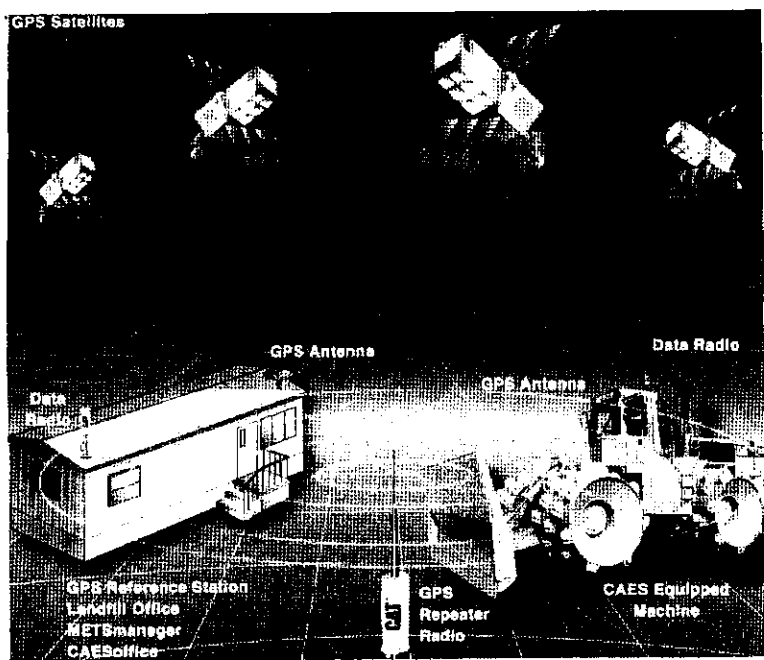
The March Board of Director's meeting was hosted by Alban Tractor Co. Inc., the authorized Caterpillar equipment dealer for this region. In addition to providing a very interesting tour of their remanufacturing and parts inventory facilities in Baltimore, our hosts made a presentation on CAT's Computer Aided Earthmoving System (CAES) for landfills. The presentation provided a compelling overview of this state of the art technology and provided an eye-opening window to the future of landfill management. CAES can be a powerful tool to maximize air space utilization, extend landfill life, ensure the most efficient use of landfill compaction/grading equipment, and precisely achieve desired elevations and grades. This GPS based technology all but eliminates the need for manual surveying. The system transmits real-time elevation, compaction and grading information via a GPS receiver to a touch screen computer display panel in the equipment operator's cab. The equipment mounted GPS receiver uses signals from one of more than 24 GPS satellites to determine machine positioning. The system actually uses two GPS receivers – one mounted on the equipment, and one stationary reference receiver (usually located in an on-site trailer or office building). Repeater stations can also be installed to enhance signals in specific areas. System software uses signals transmitted between the equipment and stationary GPS receivers to precisely calibrate equipment position and elevation to the centimeter level.

Here's an example of how the system works. A filled uncompacted cell area shows as a red area on the in-cab display panel. As the compactor moves over the area, the amount of compaction displacement achieved (say 12 inches) is measured by the GPS system. When the amount of vertical compaction achieved

during a subsequent compactor pass reaches a predefined displacement (say 2 inches), the area's color on the display panel changes to green. This tells the operator that no further compaction in that area of the cell is warranted which saves fuel, time, and ultimately money.

A software component of the CAES system, called the METS manager, allows for the integration of landfill design information with day-to-day site operations. Landfill CAD design files can be converted to CAES format, allowing design information to be displayed in the equipment and at a computer station in the landfill office. The operator is able to confirm on a real time basis that the grade/elevation of a fill cell (or cell cover material) conforms with the design plans. Both required and actual fill elevations and grades are graphically displayed in the equipment cab. Audible alarms and the color coded display alert the operator when an area is being overfilled or is diverging from required contours.

The system provides tools to accomplish other specialized functions. The exact locations of burial areas for potentially hazardous materials (like friable asbestos) can be pinpointed by coordinates and recorded for future reference. "No travel" zones can be defined and mapped to, for instance, avoid damaging buried pipes or other structures. The system can be programmed to sound an alarm in the equipment cab if the operator comes within a specified distance of a restricted area. If landfill personnel find it necessary to directly survey or confirm grades, elevations, or locations in areas where using the equipment mounted GPS is not appropriate, backpack GPS receivers are also available. For more information on the CAES system, contact Brent Stewart at Alban Tractor (tel. 410-686-7777; email - bstewart@albanat.com).



## Help Wanted

### Environmental Manager (Engineer III) Salary Range \$59,446 - \$87,776

Howard County, Maryland, Bureau of Environmental Services seeks an Environmental Manager to serve as project manager for preparation of environmental assessments and other pollution remediation studies, the acquisition and implementation of contracted services related to solid waste operations and pollution remediation, and all facets of the design and construction of capital facilities related to solid waste management and pollution remediation. Prepares permit compliance reports and applications. Requires strong computer skills including access database development, excel spreadsheets, and PLC program experience preferred. May represent the Bureau at Public Hearings. Must be a Registered Professional Engineer and have a valid Class C driver's license. Master degree in related field is preferred. Application and detailed job description will be available on-line in the middle of May at [http://www.co.ho.md.us/DOA/hr\\_joblistings.asp](http://www.co.ho.md.us/DOA/hr_joblistings.asp). For questions, please contact Evelyn Tomlin, PE, Operations Division Chief, 6751 Gateway Drive, Suite 514, Columbia, MD 21046, Tel. 410-313-6419.

# 2005 SWANA Road-E-O Winners

The SWANA Regional Road-E-O was held on Friday, April 29, 2005 at the Atlantic County Utilities Authority's facility in Egg Harbor Township, New Jersey. This event was sponsored by the Mid-Atlantic, Keystone, and New Jersey chapters of SWANA.

Thank you to all of the participants and volunteers that made the day such a great success!

## EQUIPMENT COURSE

### Loader

- 1<sup>st</sup> - Charles Farmer (Baltimore County, MD)
- 2<sup>nd</sup> - Zeno Edgard (Cape May County MUA, NJ)
- 3<sup>rd</sup> - Daniel Griffith (Harford County, MD)

### Compactor

- 1<sup>st</sup> - D. Lee Vinson (Northern Tier, PA)
- 2<sup>nd</sup> - Michael Barnes (Anne Arundel County, MD)
- 3<sup>rd</sup> - Bart Clark (Northern Tier, PA)

### Dozer

- 1<sup>st</sup> - Daryl Dietle (Baltimore County, MD)
- 2<sup>nd</sup> - William Taylor (Camden County, NJ)
- 3<sup>rd</sup> - Michael Ralston (Camden County, NJ)

### Articulated Truck

- 1<sup>st</sup> - Charles Farmer (Baltimore County, MD)
- 2<sup>nd</sup> - Bill Ramp (Atlantic County Utilities Authority, NJ)
- 3<sup>rd</sup> - Alex Pafel (Baltimore County, MD)

**Overall High Score (106) for Equipment Course**  
Charles Farmer (Baltimore County, MD)

## TRUCK COURSE

### Trash Truck - Rear Loader

- 1<sup>st</sup> - Michael Barnes (Anne Arundel County, MD)
- 2<sup>nd</sup> - James Moyer (Northern Tier Solid Waste Authority, PA)
- 3<sup>rd</sup> - David Brown (Waste Management of DE)

### Roll Off

- 1<sup>st</sup> - Anthony Prada (Anne Arundel County, MD)
- 2<sup>nd</sup> - Michael Barnes (Anne Arundel County, MD)
- 3<sup>rd</sup> - Lory Domingo (Atlantic County Utilities Authority, NJ)

### Recycle Truck

- 1<sup>st</sup> - Joe Slusarski (Atlantic County Utilities Authority, NJ)
- 2<sup>nd</sup> - Dan Foley (Atlantic County Utilities Authority, NJ)
- 3<sup>rd</sup> - David Brown (Waste Management of DE)

### Transfer Trailer

- 1<sup>st</sup> - Don Keohler (Lycoming County, PA)
- 2<sup>nd</sup> - Bob Barton (Lancaster County, PA)
- 3<sup>rd</sup> - Ron Robbins (Lancaster County, PA)

**Overall High Score (435) for Truck Course**  
Anthony Prada (Anne Arundel County, MD)

*Congratulations!* 



A contestant at the Road-E-O maneuvers a front end loader around the equipment course.

**ALBAN CAT**

**Brent D. Stewart**  
Governmental Sales  
Manager

**Alban Tractor Co. Inc.**

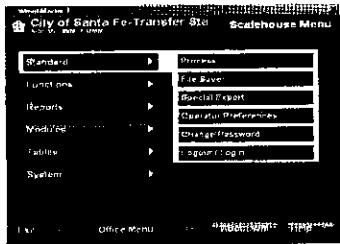
8531 Pulaski Highway  
Baltimore, Maryland 21237  
410.686.7777 tel  
410.733.2394 cell  
800.492.6994 toll free  
410.686.3729 fax  
bstewart@albancat.com

## YOUR AD HERE

The Chapter is accepting ads (2" x 3.5") that will run in four consecutive quarterly newsletters for the low price of \$100. If you are interested in placing an ad, please contact Laura Thomson at [lthomson@nmwda.org](mailto:lthomson@nmwda.org).

### Information Systems, Inc. WeighMaster 7®

Information Systems, Inc. offers solid-waste scale software for landfills, transfer stations, and WTE plants.



The WeighMaster System offers accounting and reporting. ISI provides both fully and partially automated systems.

[www.isi-infosys.com](http://www.isi-infosys.com)

## Meeting Agenda 2005

July 20, 2005

Sept. 14, 2005

**METTLER TOLEDO**

### David Baechtold

Vehicle Scale Specialist  
(410) 990-0248  
Fax: (410) 990-0360  
[dave.baechtold@mtf.com](mailto:dave.baechtold@mtf.com)

Mettler-Toledo, Inc.  
912 Langdon Ct.  
Annapolis, MD 21403  
[www.mt.com](http://www.mt.com)

SWANA invites the Mid-Atlantic Chapter to

# WASTECON 2005

The conference where solid waste professionals shine bright



**SWANA**  
SOLID WASTE ASSOCIATION  
OF NORTH AMERICA

**Save the date!**

**September 27-29 ★ Austin, TX**

For details, visit [www.WASTECON.org](http://www.WASTECON.org)

### Mid-Atlantic Chapter

**Solid Waste Association of North America**  
c/o Northeast Maryland Waste Disposal Authority  
Tower II - Suite 402, 100 South Charles Street  
Baltimore, MD 21201-2705